



Submersible pumps

TL 65

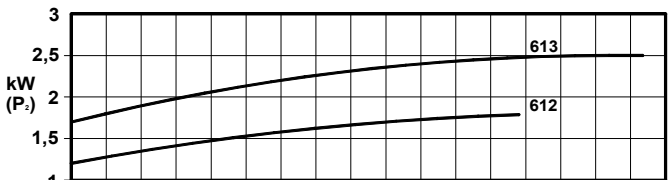
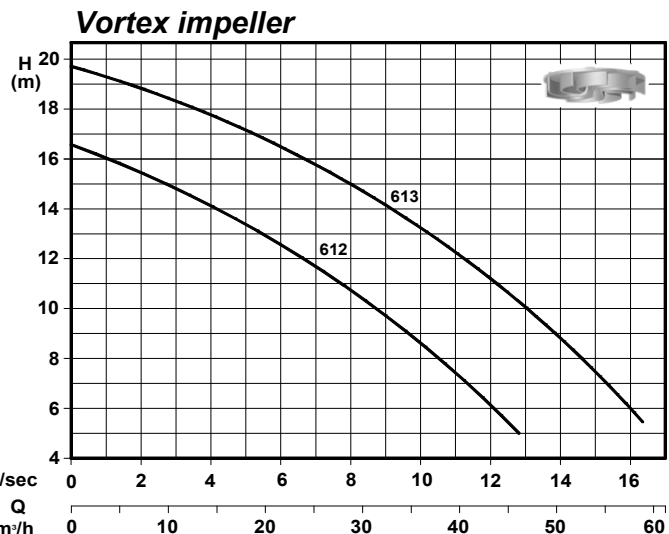
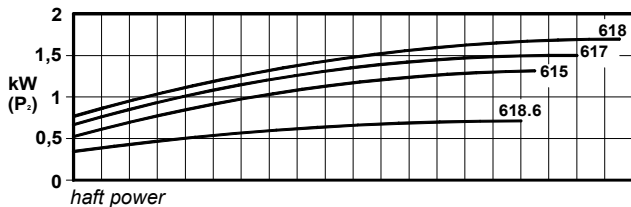
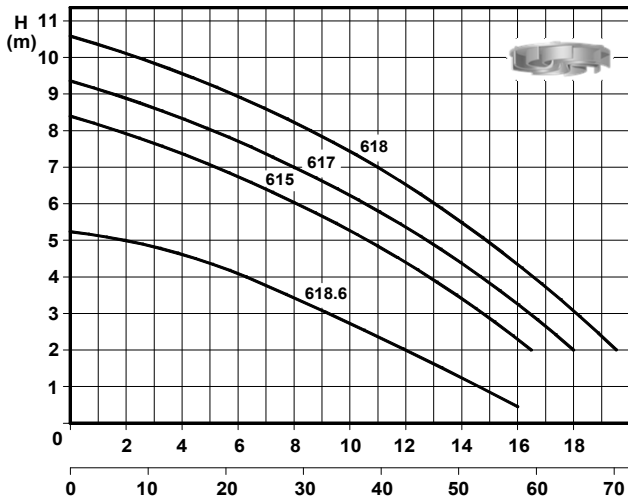


Pumps	RPM	Rated Power (kw)	Rated Current 400v.	Power Factor	Voltage	Capacitor	Cable	Free Passage	Weight
		kW	A	Cos. φ	50 Hz	μf	H07RNF 10mt.	mm	Kg
TL 618.6	960	0,9	3,4	0,77	3 ~ 400 V	-	4G1,5	60	45
TL 615	1450	1,5	3,7	0,81		-			
TL 615 M-MB-MG			10,5	-	1 ~ 230 V	40	4G2,5		
TL 617			3,7	0,81	3 ~ 400 V	-	4G1,5		
TL 617 M-MB-MG			10,5	-	1 ~ 230 V	40	4G2,5		
TL 618	1,85	4,5	0,81	-	-	4G1,5	50		
TL 612	2900	1,8	4	0,87	3 ~ 400 V				
TL 613	2,5	6,3	-						

M = Without control box and capacitor, only for use with dedicated control panel EDOL 2 / M

MB = Complete of control box with capacitor, manual switch, thermal control and bright switch

MG = FOX 10 Complete of control box with capacitor, manual switch, thermal control, bright switch and float switch FOX 10



Curve secondo ISO 9906 Liv. 2

Description

Submersible electric pumps with vortex impeller.
Double mechanical seal in oil-chamber.
Max liquid temperature 40°C.

Application

For pumping dirty water, sewage, biological muds,
ground water, rain water and industrial effluent.

Materials

Fusioni principali : Ghisa G 20
 Principal parts : Cast iron G 20
 Girante : Ghisa G 20
 Impeller : Cast iron G 20
 Albero : Acciaio inox AISI 420
 Shaft : Stainless steel AISI 420
 Viteria : Acciaio inox AISI 304
 Screws : Stainless steel AISI 304

Bearings

Single-row deep groove ball bearings.

Electric data

Motor three phase 50 Hz

Insulating motor class F (155°C - 310°F)
 Protezione IP 68 - Motor protection IP 68

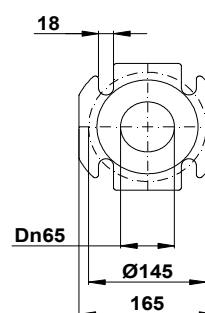
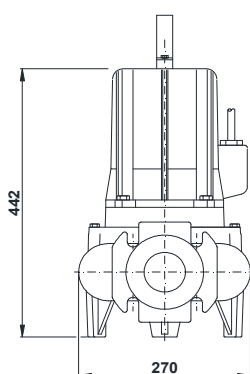
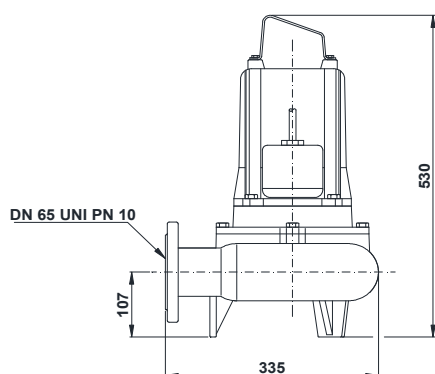
Shaft seal

Lower : Silicon carbide
 Upper : Graphite /Alumina

Discharge

DN 65 PN 10 - UNI 1092-1

Overall Dimensions



Fixed installation

Discharge connection bracket DN 65C

Discharge connection bracket DN 65/80 D

