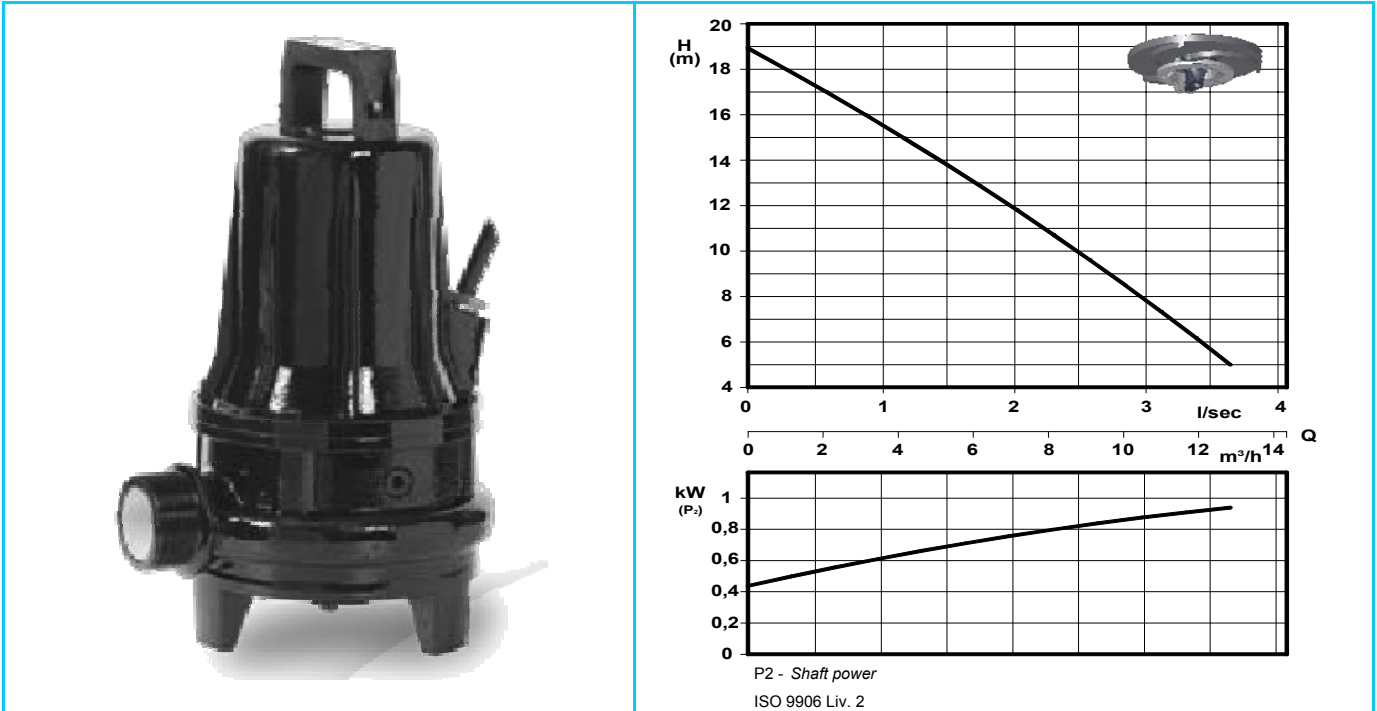


## Submersible sewage grinder pump

## JIVEX 3010



### Application

Lifting and transfer in pression by little diameter sewage and discharge waters pipings with suspended solids for domestic and industrial plants.

Habitations, productive installations can be connected also with remarkable distances and service in a cheap way without using conventional sewerage.

Pump type	kW	Voltage V.	Rated current A.	r.p.m.	Weight kg.
D 3010	0,9	3 ~ 400	2,5	2850	25
D 3010 M-MG		1 ~ 230	6,5		

**M** = Single-Phase version without control-box only for installation of a couple of units and control panel BT QMDE20

**MG** = Single-phase pump complete of electric panel with electronic card type QA/50B for the manual/automatic functioning through n°1 level float switches FOX/10 or n°2 TAURUS

Motor Classe "F" (155°C - 310°F)

Protection IP 68 / Max. temp. Liq. 40°C

### Cable

4G1,5 H07RNF

### Condenser

Only for single-phase pump = 30 μ<sup>F</sup>

## Materials

Principal parts: Cast iron G 20  
 Impeller Cast iron G 20  
 Shaft: Stainless steel AISI 420  
 Screw: Stainless steel AISI 304

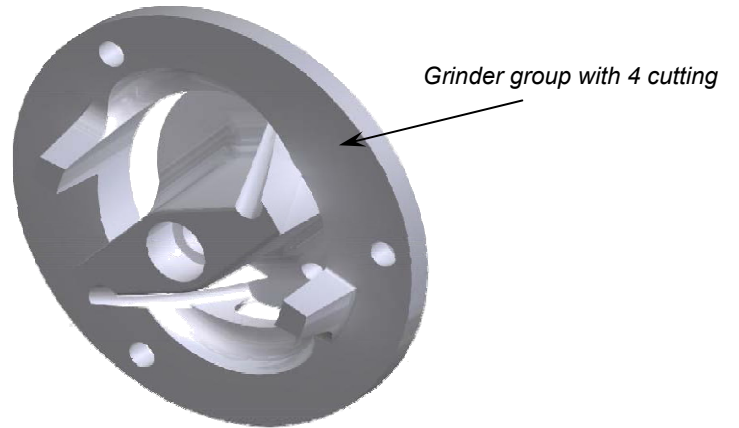
## Mechanical seal

Upper: Carbon / Aluminium

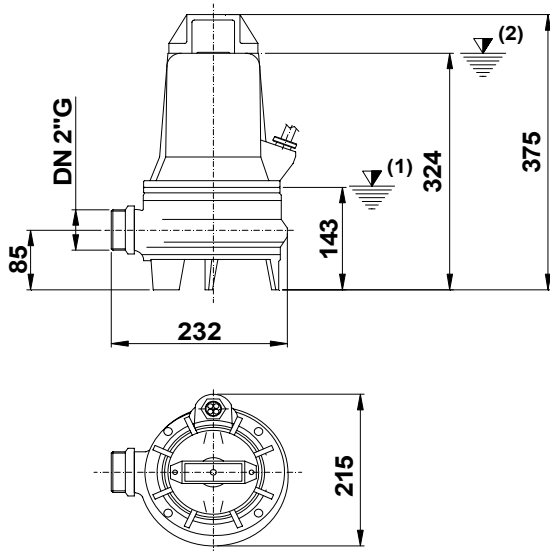
Lower: Silicon carbide / Viton

## Grinder

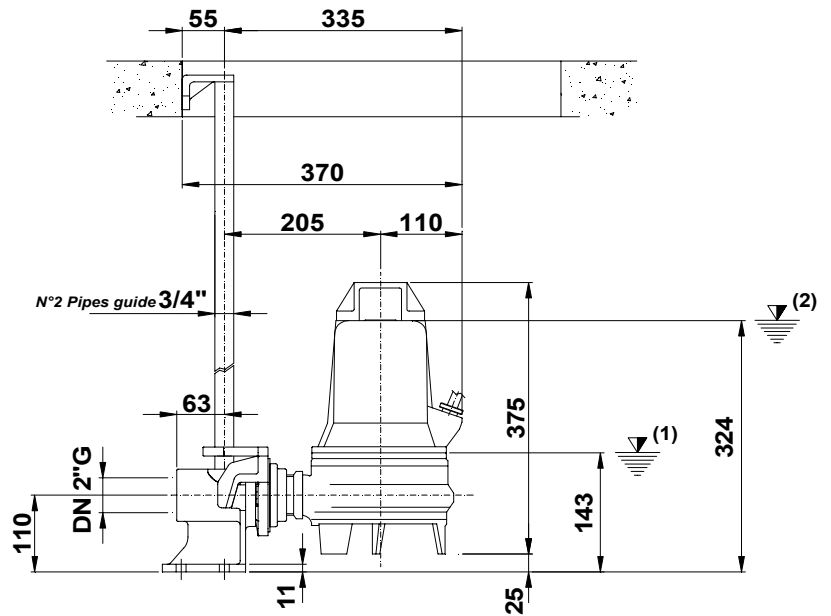
Grinding system consisting in a fixed rotor with lobes mounted on an open impeller and in a fixing ring with spiral cutting edge reliefs



## Dimensions



## Discharge Bracket



(1) Lowest shut-off level for automatic control.

(2) Minimum covering level for continuous service.

