

Submersible pumps

65 TF - TFX (AISI 316)



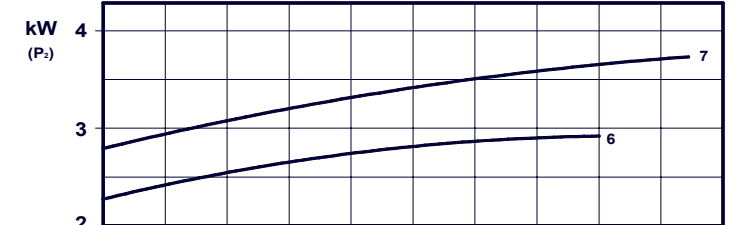
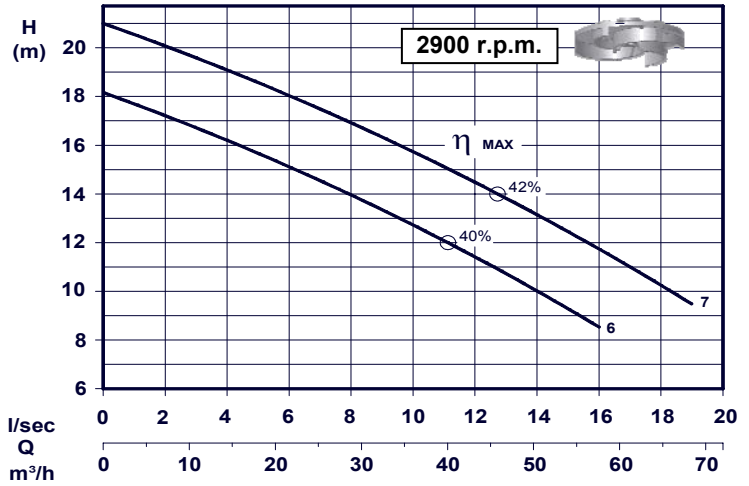
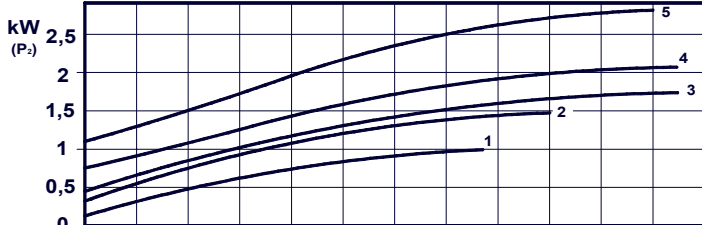
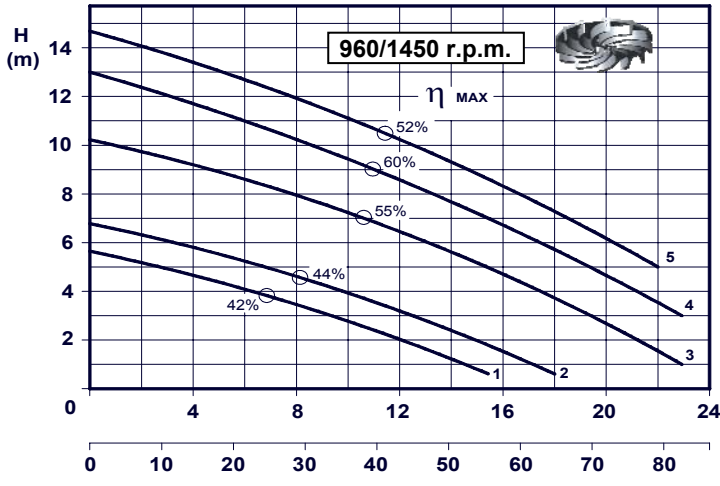
Curve	Pumps	RPM.	Rated power (P _n)	Rated current 400 V.	Power factor	Voltage	Cable	Free passage	Weight	
N°			kW	A	Cos. φ	3 ~ 50 Hz	H07RNF 10mt.	mm	Kg	
1	65 TF-TFX/6 200B	960	1,1	3,5	0,82	400 V.	4G2,5 ● 7G1,5	60	54	
2	65 TF-TFX/6 219B		1,5	4						
3	65 TF-TFX 180B	1450	1,85	4,5						
4	65 TF-TFX 200B		2,2	5,7						
5	65 TF-TFX 219B		3	6,6						
6	65 TF-TFX/2 145	2900	3	6,5					50	53
7	65 TF-TFX/2 152		4	9,1						

Protections on request: thermal protection and moisture sensor

● For pump with protections

Motor Classe "F" (155°C - 310°F) / Protection IP 68 / Max. temp. Liq. 40°C

Vortex impeller



P₂ Shaft power

Application Series TF

Suitable for lifting of muddy dirty waters, biological waste waters, rain waters, industrial and zootechnical muds. They are available with foot rest or discharge connection bracket.

ISO 9906 Liv. 2

Application Series TFX

Suitable for lifting of particular muddy waters, sea water and aggressive effluents in the chemical, pharmaceutical, alimentary, galvanic, textile and tanning industry.

Materials

Series TF

Principal parts : Cast iron G 25
 Shaft : Stainless steel AISI 420
 Impeller : Cast iron G 25
 Screw : Stainless steel AISI 304

Mechanical seals Serie TF

Upper Graphite Aluminium
 Lower Silicon carbide


Series TFX


Principal parts : Stainless steel AISI 316
 Shaft : Stainless steel AISI 316
 Girante - Impeller : Stainless steel AISI 316
 Screw : Stainless steel AISI 316

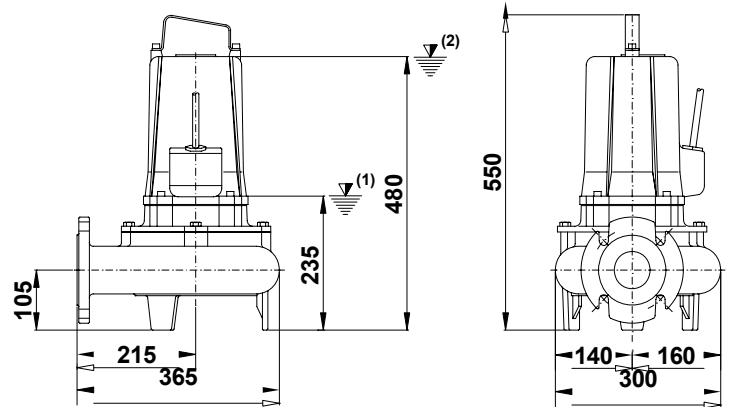
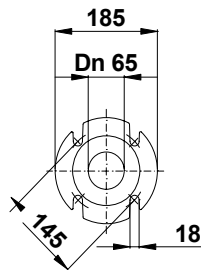
Mechanical seals Serie TFX

Upper Graphite Aluminium
 Lower Silicon carbide

Dimensions mobile installation

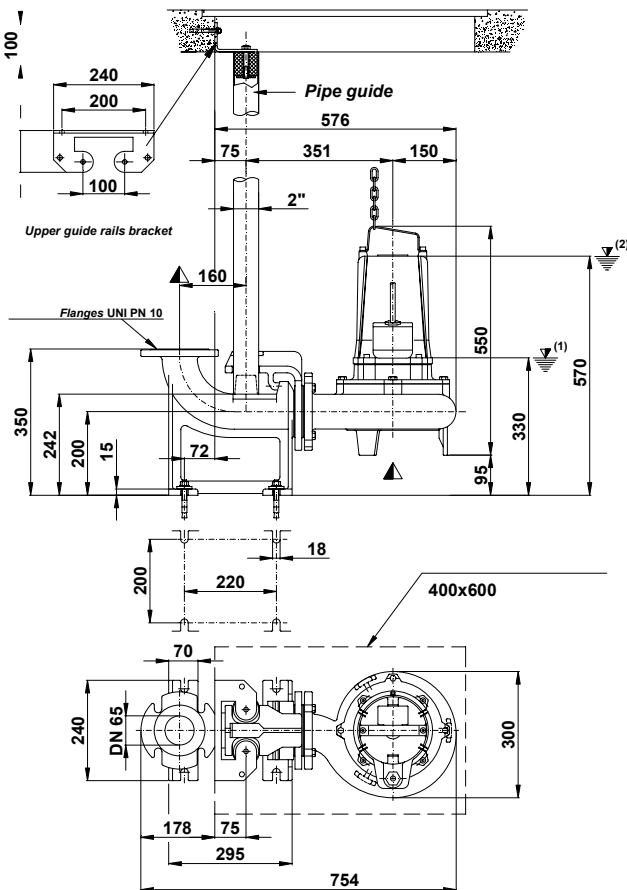
 (1) Lowest shut-off level for automatic control.

 (2) Minimum covering level for continuous service.



Fixed installation

Discharge connection bracket DN 65C



Fixed installation

Discharge connection bracket "D" type - DN 65 / 80 Construction in cast iron / Stainless steel AISI 316

