

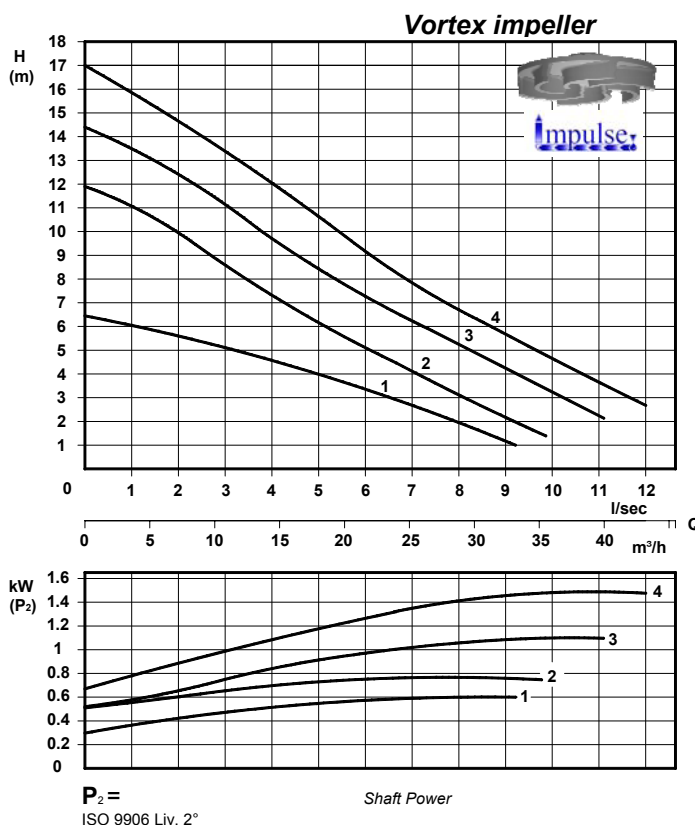


Submersible pumps

series **50 TR**



Impeller IMPULSE Patent pending



Description

Submersible electric pumps with vortex impeller.
Double mechanical seal in oil-chamber.
Max liquid temperature 40°C.

Application

For pumping dirty water, ground water, rain water, biological waste water and industrial effluent (not abrasive).

Electric data

Type impeller

Vortex con passaggio libero di 45 mm.
Vortex with free passage of 45 mm.

Curve N°	Pump type	kW P _n	Voltage V.	Capacitor μF	Rated current A.	R.P.M.
1	50 TR 1	0,75	3 ~ 400	-	2,2	1450
	50 TR 1 M-MB-MG		1 ~ 230	16	4,8	
2	50 TR 2	0,75	3 ~ 400	-	2,3	2900
	50 TR 2 M-MB-MG		1 ~ 230	16	6,5	
3	50 TR 3	1,1	3 ~ 400	-	2,8	2900
	50 TR 3 M-MB-MG		1 ~ 230	25	8,3	
4	50 TR 4	1,5	3 ~ 400	-	3,4	

P_n = Power rating

M = Used only with our control panel type QA/50B-16-25 μf or BT QMDE20

MB = Complete of control BOX

MG = Complete of control BOX and float level switch

Materials

Principal parts : Cast iron G 25
Impeller : Cast iron G 25
Shaft : Stainless steel AISI 420
Screws : Stainless steel AISI 304

Motor

Three phase 50 Hz
Insulating motor class F (155°C)
Protection IP 68

Electric cable

4x1,5 mm² - H07RNF - 8 mt.

Bearings

Single-row deep groove ball bearings.

Shaft seal

Lower : Silicon carbide
Upper : Carbon / Ceramic

Discharge

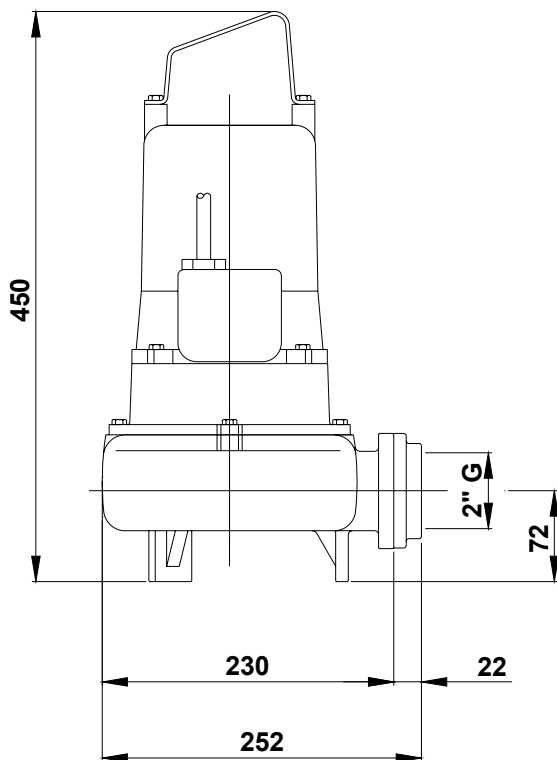
2" G ISO 228

Weight

50TR2	25 Kg
50TR1 - 50TR1 M/MB/MG	26 Kg
50TR2 M/MB/MG - 50TR3 M/MB/MG - 50TR3 - 50TR4	27 Kg

Dimensions 50 TR

Mobile installation



Discharge Bracket DN 50/2G

Fixed installation

